

VANGER

— TRADING —

Global Sourcing. Local Distribution.

COMMERCIAL STRENGTH EQUIPMENT

Commercial-grade gym equipment
at **direct-import pricing.**



Imported directly
for the Namibian
market.



WHY CHOOSE US



DIRECT IMPORTING

We source directly from
manufacturers—cutting
out middlemen and
delivering real value.



COMMERCIAL-GRADE EQUIPMENT

Durable, high-performance
equipment built for
commercial use and
long-term reliability.



BETTER PRICING

Direct importing means
better prices and
greater savings
for your business.



TAILORED SOLUTIONS

We provide solutions
that fit your business
needs, space and
budget.



**ADDITIONAL MODELS
AVAILABLE ON REQUEST.**



**FINAL PRICING TO BE
CONFIRMED ON QUOTE.**



EMAIL
info@vangertrading.com



CELL / WHATSAPP
081 432 3333
081 349 9889



WEBSITE
www.vangertrading.com

**QUALITY EQUIPMENT.
SMARTER PRICING.
BETTER RESULTS.**

FH Series



Instructional Placard

Clear and concise muscle target makes it easier for trainers to know and learn



Adjustments

Humanization design adjustment. Trainers can adjust the position according to personal body condition



Upholstery

PU leather cushion, air permeability, sweating, comfort and anti-skid



6mm Thick Steel Cable

Fitness equipment uses 6mm thick steel cable, which is more durable and safer

**FH01****Prone Leg Curl**

Size:1510*1075*1550mm

Machine Weight:234.5kg

Weight Stack:100kg

**FH02****Leg Extension**

Size:1325*1230*1550mm

Machine Weight:245.5kg

Weight Stack:100kg

**FH03****Leg Press**

Size:1960*1090*1550mm

Machine Weight:287.5kg

Weight Stack:115kg

**FH05****Lateral Raise**

Size:1260*1180*1550mm

Machine Weight:219.5kg

Weight Stack:70kg

**FH06****Shoulder Press**

Size:1325*1300*1550mm

Machine Weight:236.5kg

Weight Stack:100kg

**FH07****Rear Delt/Pec Fly**

Size:1490*1075*2190mm

Machine Weight:268.5kg

Weight Stack:100kg

**FH08****Vertical Press**

Size:1425*1395*1550mm

Machine Weight:238.5kg

Weight Stack:100kg

**FH09****Dip/Chin Assist**

Size:1685*1120*2425mm

Machine Weight:329.5kg

Weight Stack:100kg



FH10

Split Push Chest Trainer

Size:1545*1285*1860mm

Machine Weight:248.5kg

Weight Stack:100kg



FH16

Cable Crossover

Size:4265*720*2365mm

Machine Weight:325kg

Weight Stack:70kg*2



FH17

FTS Glide

Size:1525*1245*2170mm

Machine Weight:396kg

Weight Stack:70*2kg



FH18

Rotary Torso

Size:1350*1335*1550mm

Machine Weight:203.5kg

Weight Stack:70kg



FH19

Abdominal Machine

Size:1330*1290*1550mm

Machine Weight:250kg

Weight Stack:70kg



FH20

Split Shoulder Lifting Trainer

Size:1480*1270*1550mm

Machine Weight:232kg

Weight Stack:100kg



FH23

Seated Leg Curl

Size:1600*1235*1550mm

Machine Weight:231kg

Weight Stack:70kg



FH24

Glute Isolator

Size:1350*950*1550mm

Machine Weight:213kg

Weight Stack:70kg



FH25

Abductor/ Adductor Trainer

Size:1480*825*1550mm

Machine Weight:223kg

Weight Stack:70kg



FH26

Seated Dip

Size:1285*1150*1550mm

Machine Weight:228kg

Weight Stack:85kg



FH28

Triceps Extension

Size:1235*1180*1550mm

Machine Weight:205kg

Weight Stack:70kg



FH29

Split High Pull Trainer

Size:1540*1180*2055mm

Machine Weight:188kg

Weight Stack:100kg



FH30

45 Degree Camber Curl

Size:1250*1230*1550mm

Machine Weight:203kg

Weight Stack:70kg



FH31

Back Extension

Size:1335*1060*1550mm

Machine Weight:233.5kg

Weight Stack:100kg



FH33

Seated Low Row

Size:1455*1155*1820mm

Machine Weight:243kg

Weight Stack:85kg



FH34

Seated Row

Size:1305*1265*1550mm

Machine Weight:233kg

Weight Stack:100kg



FH35

Pulldown

Size:1700*1450*1955mm

Machine Weight:267kg

Weight Stack:100kg



FH93

Seated Calf

Size:1330*1140*1550mm

Machine Weight:201.5kg

Weight Stack:70kg



FH85

Abdominal/Back Extension

Size:1220*1155*1550mm

Machine Weight:216.5kg

Weight Stack:70kg



FH85B

Abdominal/Back Extension

Size:1335*1100*1550mm

Machine Weight:216.5kg

Weight Stack:70kg



FH86

Biceps/Triceps

Size:1590*1320*2230mm

Machine Weight:215.5kg

Weight Stack:70kg



FH86B

Biceps/Triceps

Size:1300*1295*1550mm

Machine Weight:215.5kg

Weight Stack:70kg



FH87

Leg Extension/Curl

Size:1460*1245*1550mm

Machine Weight:259.5kg

Weight Stack:70kg



FH87B

Leg Extension/Curl

Size:1340*1245*1550mm

Machine Weight:259.5kg

Weight Stack:70kg



FH88

Chest/Shoulder Press
 Size:2235*1500*1550mm
 Machine Weight:264kg
 Weight Stack:70kg



FH89

Pull Down/Long Pull
 Size:1610*1280*2145mm
 Machine Weight:268kg
 Weight Stack:70kg



FH89B

Pull Down/Long Pull
 Size:2110*1100*2225mm
 Machine Weight:268kg
 Weight Stack:70kg

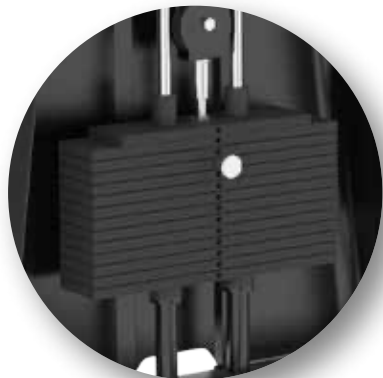


F Series



Instruction

Clear and concise muscle target makes it easier for trainers to know and learn.



Updated Weight Stack

The weight can be increased or decreased according to trainer's own situation, and the magnetic pull pin has good safety protection effect.



Adjuster

Humanization Design Adjustment. Trainers can adjust the position according to personal body condition



6mm Thick Steel Cable

Fitness equipment uses 6mm thick steel cable, which is more durable and safer.



F01

Prone Leg Curl

Size:1645*940*1630mm

Machine Weight:179.5kg

Weight Stack:70kg



F02

Leg Extension

Size:1395*990*1630mm

Machine Weight:186.5kg

Weight Stack:70kg



F03

Leg Press

Size:1960*1040*1630mm

Machine Weight:223kg

Weight Stack:100kg



F04

Butterfly

Size:1485*855*1630mm

Machine Weight:223kg

Weight Stack:70kg



F05

Lateral Raise

Size:1255*825*1630mm

Machine Weight:169.5kg

Weight Stack:70kg



F06

Text

Incline Shoulder Press

Size:1885*1320*1630mm

Machine Weight:239kg

Weight Stack:70kg



F07

Pearl Delt/Pec Fly

Size:1170*850*2030mm

Machine Weight:260kg

Weight Stack:100kg



F08

Vertical Press

Size:1380*1315*1630mm

Machine Weight:193kg

Weight Stack:70kg



F09

Dip/Chin Assist

Size:1400*1135*2345mm

Machine Weight:290.5kg

Weight Stack:100kg



F11

Multi Hip

Size:1295*1055*1630mm

Machine Weight:239kg

Weight Stack:70kg



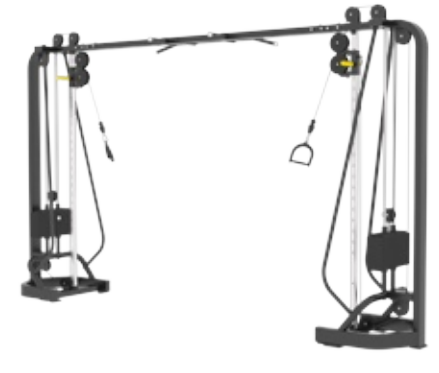
F13

Incline Chest Press

Size:2160*1430*1630mm

Machine Weight:239kg

Weight Stack:70kg



F16

Adjustable Crossover

Size:3815*685*2280mm

Machine Weight:299kg

Weight Stack:70kg*2



F17

FTS Glide

Size:1885*1000*2295mm

Machine Weight:320.5kg

Weight Stack:70kg*2



F18

Rotary Torso

Size:1115*1055*1630mm

Machine Weight:175kg

Weight Stack:70kg



F19

Abdominal Isolator

Size:1255*940*1630mm

Machine Weight:209kg

Weight Stack:70kg



F20

Seated Shoulder Press

Size:1895*1435*1630mm

Machine Weight:232.5kg

Weight Stack:70kg

**F21****Abductor A**

Size:1550*890*1630mm

Machine Weight:214kg

Weight Stack:70kg

**F22****Adductor B**

Size:1550*890*1630mm

Machine Weight:214kg

Weight Stack:70kg

**F23****Leg Curl**

Size:1610*990*1630mm

Machine Weight:223kg

Weight Stack:70kg

**F24****Glute Isolator**

Size:1185*1070*1630mm

Machine Weight:141kg

Weight Stack:70kg

**F25****Abductor / Adductor**

Size:1545*900*1630mm

Machine Weight:221.5kg

Weight Stack:70kg

**F26****Seated Dip**

Size:1600*1190*1630mm

Machine Weight:230kg

Weight Stack:70kg

**F28****45 Degree
Triceps Extension**

Size:1115*930*1630mm

Machine Weight:190kg

Weight Stack:70kg

**F30****45 Degree Camber Curl**

Size:1225*920*1630mm

Machine Weight:167kg

Weight Stack:70kg



F31

Back Extension

Size:1225*970*1630mm

Machine Weight:194.5kg

Weight Stack:70kg



F33

Long Pull

Size:1655*1300*2040mm

Machine Weight:268kg

Weight Stack:100kg



F34

Vertical Row

Size:1570*1205*1630mm

Machine Weight:194kg

Weight Stack:70kg



F35

Pulldown

Size:1235*1175*2230mm

Machine Weight:213kg

Weight Stack:100kg



F85B

Abdominal / Back Extension

Size:995*1195*1630mm

Machine Weight:198kg

Weight Stack:70kg



F86B

Biceps / Triceps

Size:980*1220*1630mm

Machine Weight:182kg

Weight Stack:70kg



F87B

Leg Extension / Curl

Size:975*1420*1630mm

Machine Weight:193.5kg

Weight Stack:70kg



F88

Chest / Shoulder Press

Size:2000*1325*1630mm

Machine Weight:245.5kg

Weight Stack:70kg



F89

Pull Down/ Long Pull
 Size:2040*1210*2330mm
 Machine Weight:214kg
 Weight Stack:70kg



F90

Prone Leg Curl / Leg Extention
 Size:1860*965*1630mm
 Machine Weight:187.5kg
 Weight Stack:70kg



F95

Standing Rear Dear/ Pec Fly
 Size:765*1525*1650mm
 Machine Weight:174.5kg
 Weight Stack:70kg



F97

Forearm Trainer
 Size:750*265*860mm
 Machine Weight:125kg
 Weight Stack:100kg



F14

Rotary Rack
 Size:1270*695*1290mm
 Machine Weight:65kg



F36

Flat Bench
 Size:1410*560*430mm
 Machine Weight:23kg



F37

Adjustable Decline Bench
 Size:1710*680*850mm
 Machine Weight:46kg



F38

Multi-Purpose Bench
 Size:1180*675*945mm
 Machine Weight:21.5kg



F39

Super Bench

Size:1400*665*520mm

Machine Weight:37kg



F40

Super Bench

Size:1320*565*470mm

Machine Weight:38kg



F41

Olympic Decline Bench

Size:2055*1655*1235mm

Machine Weight:72kg



F42

Olympic Bench Incline

Size:2030*1780*1500mm

Machine Weight:92kg



F43

Text

Olympic Bench

Size:1785*1775*1225mm

Machine Weight:58kg



F44

Seated Preacher Curl

Size:1120*775*905mm

Machine Weight:43.5kg



F45

Back Extension

Size:1085*790*765mm

Machine Weight:43.5kg



F46

Hip Thruster

Size:1540*1360*780mm

Machine Weight:83.5kg



F47

Vertical Knee Up/Dip

Size:1175*815*1615mm

Machine Weight:96kg



F48

Power Cage

Size:1320*1485*2295mm

Machine Weight:125.5kg

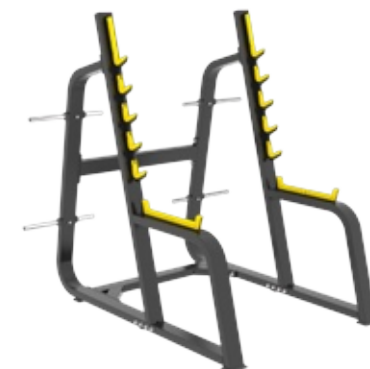


F49

Dumbbell Rack

Size:2480*750*720mm

Machine Weight:64kg



F50

Squat Rack

Size:1710*1690*1800mm

Machine Weight:108.5kg



F51

Olympic Seated Bench

Size:1775*1530*1770mm

Machine Weight:135kg



F53

Handle Rack

Size:1090*740*1070mm

Machine Weight:68kg



F54

Vertical Plate Tree

Size:630*540*1270mm

Machine Weight:25kg



F55

Barbell Rack

Size:1050*790*1460mm

Machine Weight:71kg



F56

Leg Press

Size:2180*1650*1350mm

Machine Weight:220kg



F57

Hack Slide

Size:2250*1650*1275mm

Machine Weight:194kg



F58

Leg Press & Hack Slide

Size:2260*1690*1430mm

Machine Weight:325kg



F61

Incline Level Row

Size:1735*1110*1175mm

Machine Weight:66kg



F62

Seated Calf

Size:1465*640*1015mm

Machine Weight:54kg



F63

Smith Machine

Size:2210*1400*2435mm

Machine Weight:290kg



F65

Super Squat

Size:1985*1650*1415mm

Machine Weight:150kg



F65B

Super Squat

Size:1985*1560*1760mm

Machine Weight:150kg



F70
Abdominal Trainer
 Size:1530*930*1040mm
 Machine Weight:60.5kg



F71
Stretch Trainer
 Size:1290*530*1090mm
 Machine Weight:80kg



F72
Beauty Dumbbell Rack
 Size:1440*705*1005mm
 Machine Weight:70.5kg



F73
Three-tier Dumbbell Rack
 Size:1320*575*870mm



F80
Knee Up Chin + Pull Up
 Size:1360*1465*2230mm
 Machine Weight:115kg



F84
Squat Lunge
 Size:1720*1500*845mm
 Machine Weight:200kg



F92
Sled
 Size:870*650*1115mm
 Machine Weight:54kg



F94
Glute Ham Raise Bench
 Size:1640*810*1035mm
 Machine Weight:84kg



F96

Dual Function Preacher Curl

Size:1245*725*1070mm

Machine Weight:83kg



F98

Adjustable Bench

Size:1495*710*1120mm

Machine Weight:63.5kg



F99

Adjustable Incline Flat Bench

Size:1290*570*475mm

Machine Weight:24kg



F101

Reverse Hyper Extension

Size:2300*1100*780mm

Machine Weight:60kg

F64

8 Multi Station

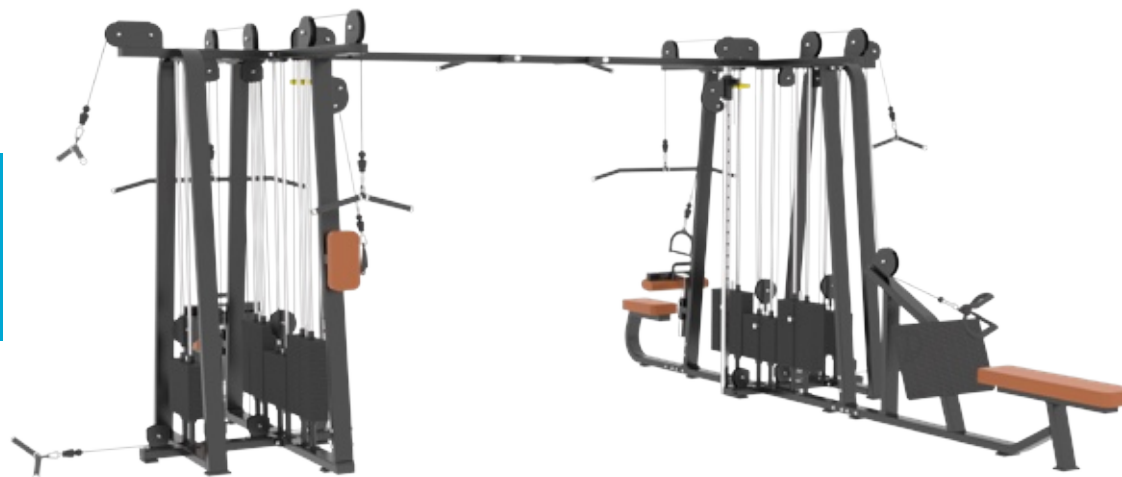
Size:5130*4740*2350mm

Machine Weight:1100kg

Weight Stack:56kg*2

68kg*3

100kg*3





F81

5 Multi Station (Half F64 & half F16)

Size:4895*4605*2345mm

Machine Weight:860kg

Weight Stack:56kg*2

68kg*1

100kg*2

F82

4 Multi Station

Size:4605*1415*2345mm

Machine Weight:600kg

Weight Stack:56kg*1

68kg*1

100kg*2



F83

8 Multi Station

Size:5170*4605*2345mm

Machine Weight:1300kg

Weight Stack:56kg*2

68kg*2

100kg*4

PL Series



Grip

Non-slip grip length is reasonable ,angle is scientific,anti-slip effect is obvious.



Stability

Flat elliptical tube steel frame ,safe and reliable ,never deformed.



Storage

Comes with weight plate storage bar and functional devices,Storage location for easy use.



Upholstery

Designed according to ergonomic principles,high-quality PU finishes,the seat can be adjusted in multiple levels,So that exerciser of different sizes can find a suitable exercise method.



PL01

Chest Press

Size:1925*1040*1745mm

Machine Weight:145.5kg



PL02

Incline Press

Size:1940*1400*1800mm

Machine Weight:120.5kg



PL03

Shoulder Press

Size:1530*1475*1500mm

Machine Weight:112kg



PL04

Seated Dip

Size:1975*1015*1005mm

Machine Weight:116kg



PL05

Biceps Curl

Size:1475*925*1265mm

Machine Weight:97kg



PL06

Pulldown

Size:1825*1455*2040mm

Machine Weight:126.5kg



PL07

Low Row

Size:1680*1310*1700mm

Machine Weight:117kg



PL08

Rowing

Size:1455*1385*1270mm

Machine Weight:114kg



PL09

Leg Curl

Size:1540*1275*1370mm

Machine Weight:115kg



PL10

Leg Extension

Size:1850*1530*1210mm

Machine Weight:112.5kg



PL11

Standing / Seated Shrug

Size:1630*1155*1160mm

Machine Weight:106kg



PL12

Iso-lateral Horizontal Bench Press

Size:1915*1750*1010mm

Machine Weight:109.5kg



PL13

Super Incline Chest Press

Size:1700*1315*1545mm

Machine Weight:130kg



PL14

Decline Chest Press

Size:1755*1130*1805mm

Machine Weight:129kg



PL15

Wide Chest Press

Size:1920*1270*1845mm

Machine Weight:145.5kg



PL16

Iso-Lateral Chest Press / Pulldown

Size:1915*1675*2120mm

Machine Weight:172kg



PL17

Iso-Lateral Front Lat Pulldown

Size:1670*1615*2080mm

Machine Weight:141kg



PL18

D.Y Row

Size:1630*1390*2050mm

Machine Weight:147kg



PL19

Gripper

Size:1230*660*940mm

Machine Weight:47kg



PL20

Abdominal Oblique Crunch

Size:1485*1200*1700mm

Machine Weight:126kg



PL21

Iso-Lateral Leg Curl

Size:1755*1320*940mm

Machine Weight:92.5kg



PL22

Iso-Lateral Leg Press

Size:1890*1198*1430mm

Machine Weight:190.5kg



PL23

Tibia Dorsi Flexion

Size:1110*345*345mm

Machine Weight:25kg



PL24

Hip Builder

Size:1575*1625*1420mm

Machine Weight:168kg



PL25
Side Arm Lifting Trainer
Size:1235*1375*1265mm
Machine Weight:89.5kg



PL26
Arm Press Back
Size:1725*1865*1475mm
Machine Weight:134kg



PL27
Standing Calf
Size:1270*1455*1565mm
Machine Weight:89kg



PL28
Shoulder Press
Size:1120*1856*1745mm
Machine Weight:99.5kg



PL29
Abductor
Size:1750*1185*1185mm
Machine Weight:108.5kg



PL30
Adductor
Size:1680*1180*1170mm
Machine Weight:109kg



PL31
V- Squat
Size:2015*1610*1650mm
Machine Weight:152kg



PL32
Abdominal Trainer
Size:1100*520*485mm
Machine Weight:30kg



PL33

Decline Chest Press

Size:2155*1785*1025mm

Machine Weight:119kg



PL34

Seated Leg Curl

Size:1600*1455*1255mm

Machine Weight:112kg



PL35

Abdominal & Knee Up/Dip

Size:2545*770*1720mm

Machine Weight:102.5kg



PL36

Lat Pulldown

Size:1655*1415*2085mm

Machine Weight:135kg



PL37

Multi-angle Chest Push Trainer

Size:2080*2100*2075mm

Machine Weight:251kg



PL38

Squat Machine

Size:1915*990*1935mm

Machine Weight:122kg



PL39

Bent-Over Row

Size:1735*1660*1245mm

Machine Weight:189kg



PL40

Glute Builder

Size:1845*1680*1245mm

Machine Weight:145kg



PL41

Dual-function Bent-over & Standing Row Machine

Size:1895*1680*1235mm



PL42

3D Multi Angle Hip Abduction Trainer

Size:1805*960*1405mm



PL43

Pendulum Style Back Kick Trainer

Size:1515*1295*1400mm



PL44

Kneeling Hip Punch Trainer

Size:1770*1315*1510mm



PL45

Dual Directional 45 Degree Extension

Size:1545*1131*1155mm



PL56

Linear Leg Press

Size:2425*1415*1505mm

Machine Weight:244kg



PL57

Linear Hack Squat

Size:2180*1610*1500mm

Machine Weight:184.5kg



PL61

Incline Lever Row

Size:1845*1330*1155mm

Machine Weight:70kg



PL62

Calf Raise

Size:1455*740*1045mm

Machine Weight:53.5kg



PL65

Squat

Size:2285*1760*1565mm

Machine Weight:218.5kg



PL66

Standing Press

Size:2080*1550*2105mm

Machine Weight:134kg



PL67

Standing Incline Press

Size:1945*1915*1925mm

Machine Weight:132.5kg



PL68

Standing Decline Press

Size:1890*1440*2560mm

Machine Weight:145kg



PL69

Squat Lunge

Size:1600*1525*790mm

Machine Weight:96.5kg



PL73B

Hip Thrust Machine

Size:1765*1650*840mm

Machine Weight:100.5kg



PL74

Hip Belt Squat Machine

Size:1810*1380*1150mm

Machine Weight:143.5kg



PL75

Incline Chest Fly Machine

Size:1545*1470*1090mm

Machine Weight:65kg



PL76

Vertical Leg Press

Size:1505*1335*1900mm

Machine Weight:165kg

Accessories Series



WG001

Dumbbell

Machine Weight:2.5kg-50kg
7.5kg...50kg



WG425

HealthFit Dumbbell

Machine Weight:2.5kg/5kg/
7.5kg/...50kg

Text



WG424

HealthFit Weight Plate

Machine Weight:2.5KG/5KG/
10KG/15KG/
20KG/25KG



WG012

3 Holes Weight Plate

Machine Weight:2.5kg/5kg/
10kg/15kg/
20kg/25kg



WG055

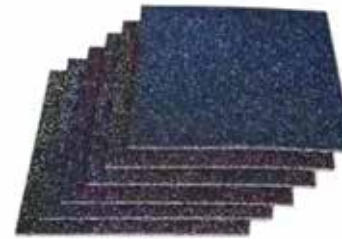
Adjustable Barbell

Machine Weight:1kg/2.5kg/5kg



WG260

Fitness Handles



WG255

Rubber Flooring

Size:500x500mm



LL135

**BIA Physical
Fitness Instrument**

Size:799*452.5*1100mm

Machine Weight:16kg



VANGER

— TRADING —

Global Sourcing. Local Distribution.

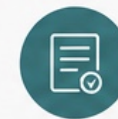
THANK YOU FOR YOUR INTEREST

We appreciate the opportunity to be your trusted partner for **fitness equipment**.

Let us help you build a stronger, more successful facility.



ADDITIONAL MODELS
AVAILABLE ON REQUEST.



FINAL PRICING TO BE
CONFIRMED ON QUOTE.

GET IN TOUCH

We're here to support your business with the right equipment solutions.
Contact us today.



EMAIL

info@vangertrading.com



CELL / WHATSAPP

081 432 3333
081 349 9889



WEBSITE

www.vangertrading.com

QUALITY EQUIPMENT.
SMARTER PRICING.
BETTER RESULTS.